



**Welcome to....
Year 1 and 2
Assembly and Celebration**

A welcome from the Executive Headteacher and Interim Headteacher:

A very warm welcome to all our new Year 1 and 2 children and their families – these are very exciting times at Ravensthorpe and we are glad to be able to welcome you back on site to share key points for the year ahead and to celebrate the successes from this year.

It has been a challenging year as we emerge from the Covid-19 pandemic and learn to live with Covid. There are some things that we taken on board during the past two years that have worked well – such as using the front courtyard to enter school and some that we will be happy to move away from (not being able to meet in person!) However, Covid has not gone away and another peak is likely over the summer and in the Autumn Term – this may mean things have to change again so please make sure we have up-to-date contact information for you.

Our new Year 1 and 2 teams are looking forward to getting to know your children and to work with you on these important years in your child's educational journey. Together, we can ensure that everyone does indeed Explore, Succeed and Soar!

With best wishes, Mrs Bowyer (Interim Headteacher) and Mr Fry (Executive Headteacher)

Meet the team 2022 - 2023



Mr Fry
Executive Head
Teacher



Mrs Bowyer
Interim Head
teacher



Mrs Burgess
Assistant Head



Mrs Jima
Safeguarding
and Family
Support



Mrs Deegan
Special Educational Needs Coordinator



Mrs Mack
Family Support

The Year 1 and 2 Team



Mrs Cannon
Lower School Phase Leader
and Teacher of the
Sparrowhawks (Year 2)



Mrs Norton
Teacher of
Yellowbill Kites
in Year 1



Mrs Bowling
Teacher of Red
Kites in Year 1



Mrs Smy
Teacher of
Goshawks in
Year 2



Miss Harding
Lower School
HLTA



Mrs Pedley
PPA HLTA

At Ravensthorpe, we aim for all our children to...

EXPLORE, SUCCEED AND **SOAR!**



Celebrating Success this year....



Lukas has increased in confidence and made incredible progress. He applies what he has learnt to new things.

Pratik has flourished into a resilient, independent learner who is kind, empathetic and always tries his best.



Kamile has really worked hard this year, focused on her work and used everything she been taught to really take off and fly with her learning.



LEARNING



OPPORTUNITY



COMMUNITY



PERSONAL
BEST



LEADERSHIP



The School Day – changes for 2022/3

Doors open: 8.40am
Start: 8:45 am
Finish: 3 pm

From September, all classes will start at 8:45 am.

Years 1 and 2 will enter via the doors at the Front of School



A member of support staff will greet your child at the door. Your child will then walk straight down to their classroom where their teacher will be waiting for them. They will then get on with their first lesson of the day.

At the end of the day, **school will finish at 3pm.**

Year 1 and 2 Parents should wait outside the front courtyard to be called forward.

.

School Uniform

Uniform for years 1 - 5



Uniform Years 1-5

Children **must** wear the full school uniform **unless** it is a PE day.

For Years 1 – 5 the uniform is:

- A white polo shirt
- A Dark Green Cardigan or Jumper
- Dark Grey trousers, skirt or pinafore dress
 - Black/Grey socks or tights
- Smart Black School Shoes (not trainers or boots)

These can be bought from most major supermarkets or from Chroma Sports.

From Reception to Year 2, children are expected to also bring a book bag to school each day – these can be purchased from Chroma Sports.

Year 3 – 6 should bring a bag each day – for Year 5 and 6, this should be large enough to safely carry their ipads

Long hair should be tied back using green or black hair ties/bands. Decorative hair bands (such as unicorns/cats) **must not** be worn to school

School Uniform – PE Days Only

Our PE Uniform is pictured below – children should wear **plain** t-shirts in their house colour, **plain** black PE Shorts or Joggers. They can also wear a plain black hoodie on PE days

Children should not wear patterned leggings or tops to school, even on PE days. This includes sports tops with logos.

Long hair must be tied back on PE days, using plain green/black hair accessories

PE Uniform for PE days ONLY

Black sweatshirt &
PE T-shirt in House colour
(Red, Blue, Green or Yellow)



AND

AND

Black PE Shorts



Plain Black joggers



AND Black trainers
(NOT Plimsolls)



CHROMA
SCHOOL / SPORT / BUSINESS

Unit 10, Wulfric Square
Bretton Peterborough PE3 8RF

T: 01733 262526 E: sales@chromasport.co.uk

Years 1-6
PE Uniform

All uniform items
can be
purchased from
supermarkets.

From
September, we
will be
contacting
families where
children do not
wear the correct
uniform to
school

YEAR 1

On **Wednesdays, Thursdays** and **Fridays** you should wear this. There will be no exceptions.



Mondays, and Tuesdays are PE days. On these days you should wear your PE uniform. Other items of clothing are not permitted.

Black sweatshirt &
PE T-shirt in House colour
(Red, Blue, Green or Yellow)

AND



AND Black trainers
(NOT Plimsolls)



AND
Black PE Shorts Plain Black joggers



Year 2

On **Mondays, Wednesdays** and **Thursdays** you should wear this.
There will be no exceptions.



Tuesdays and **Fridays** are PE days. On these days you should wear your PE uniform. Other items of clothing are not permitted.

Black sweatshirt &
PE T-shirt in House colour
(Red, Blue, Green or Yellow)

AND



AND Black trainers
(NOT Plimsolls)



AND

Black PE Shorts

Plain Black joggers



PLEASE NAME EVERY ITEM THAT YOU SEND INTO SCHOOL



Handwrite labels using a sharpie pen



For a quick and easy way just handwrite them in pen. Check every so often that they are not fading.



When a child misplaces a named item, it is much easier to hand it back to the correct person. Items which are not named end up in 'lost property' and rarely end up back with the correct person!

Lunchtime

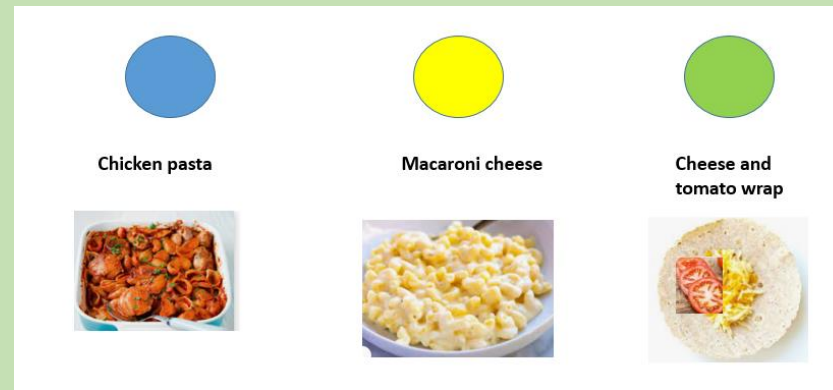


- School lunches are free for all children in EYFS and KS1.
- The menu is available on the website. Every day the children can choose from 3 options:

Meat

Vegetarian

Snack option



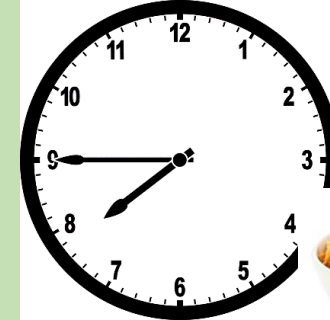
- Your child can bring a healthy packed lunch. We are a nut free school (this includes Nutella).



Before and After School Clubs



- Breakfast Club is available from 7:45am
- After School Club until 6:00pm



This is a payable service. Please contact Little Tigers directly if you require before or after school childcare [01733 330630](tel:01733330630).

New for 2022/3: The RPS Way...



PETERBOROUGH KEYS
ACADEMIES TRUST

Be **RESPECTFUL**

Be **PREPARED**

Be **SAFE**

LEARNING

OPPORTUNITY

COMMUNITY

PERSONAL
BEST

LEADERSHIP

High Performance Learning

Ravensthorpe Primary School are proud to say we are an accredited High Performance Learning World Class School.

- High Performance Learning (HPL) is a philosophy of teaching that believes that ALL can achieve highly regardless of background. It is based on modern educational science to identify key skills shared by those who are successful. We then teach those skills to our pupils and aim to have ALL achieving highly.
- Each VAA and ACP is covered in assemblies and children are rewarded with 'Dojo' points for demonstrating these skills. We also celebrate our High Performance Learning Stars in our Feelgood Friday Assemblies
- If you would like to find out more there is a book for parents "Great Minds and How to Grow Them" by Deborah Ayer.

EMPATHETIC

AGILE



World Class School 2021

Values, Attitudes and Attributes (VAAs)

LEARNING



AGILE



EMPATHETIC



Hard Working



OPPORTUNITY

COMMUNITY

PERSONAL
BEST

LEADERSHIP

ACPs

Meta Thinking

- Meta-cognition
- Self-regulation
- Strategy-planning
- Intellectual confidence

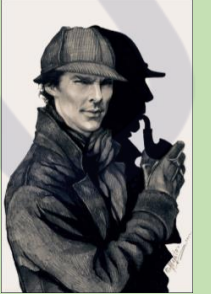


Matilda



Analysing

- Critical or logical thinking
- Precision
- Complex and multistep problem solving



Sherlock
Holmes

Linking

- Generalisation
- Connecting findings
- Big picture thinking
- Abstraction
- Imagination
- Seeing alternative perspectives



Gandalf



Advanced Cognitive Performance Characteristics



Creating

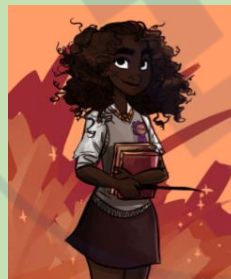
- Intellectual playfulness
- Flexible thinking
- Fluent thinking
- Originality
- Evolutionary and revolutionary thinking.



George

Realising

- Automaticity
- Speed and accuracy



Hermione



Dates for your diary

**Monday 19th September @
2.30pm or 5pm
Parents Meeting about how
Early Reading is taught at
Ravensthorpe**

These are just some of the key dates for the year. Please ensure you check the school website and Feel Good Friday PowerPoint regularly for other events.

Term Dates 2022-2023

Autumn Term

Wednesday 7th September 2022

Term Starts

Monday 24th October – Friday 28th October

Half term – School Closed

Wednesday 21st December

Term Ends – Early Finish

Spring Term

Wednesday 4th January 2023

Term Starts

Monday 13th – Friday 17th February

Half Term – school closed

Friday 31st March

Term Ends – Early Finish

Summer Term

Monday 17th April

Term Starts

Monday 1st May

May day – school closed

Monday 29th May – Friday 2nd June

Half Term – school closed

Wednesday 19th July

Term Ends - Early

Attendance

Attendance across the school for 2021-22 is just over 90% - we need to be aiming for at least 95% attendance for everyone!

The school cannot authorise holidays during term time. Wherever possible, appointments, including for passports must be made for during the school holiday. We cannot authorise absences where a parent has to travel abroad. For absences relating to funerals or other family emergencies, a short period of absence of not more than 1-3 days may be approved, but must be requested using the online form:

<https://forms.office.com/r/ZHSvg1c71N>

All children will have days when they're not able to go to school, whether that's due to illness, holiday or a family emergency, and the occasional day off is unlikely to affect their education.

However, missing too much school can be seriously detrimental.

A child who misses school just twice per month will lose out on 18 days' education across the school year – that's nearly four weeks.

Missing a few days of school here and there may not seem a big deal, but research shows that it can have a significant impact on children's learning. Children who miss a substantial amount of school fall behind their peers, and struggle to catch up.

Poor attendance often starts at primary school, and children who fall into this pattern are likely to underachieve at secondary school. Pupils who miss between 10 and 20% of school (that's 19 to 38 days per year) stand only a 35% chance of achieving five or more good GCSEs, compared to 73% of those who miss fewer than 5% of school days.

Friendships can be affected by persistent absence, too: it can be hard for a child who misses lots of school to form relationships with their classmates.

Information from <https://www.theschoolrun.com/parents-guide-school-attendance>

How can I help my child over the holidays?

Read to your children as often as possible. Talk to your children about the meaning of new words.

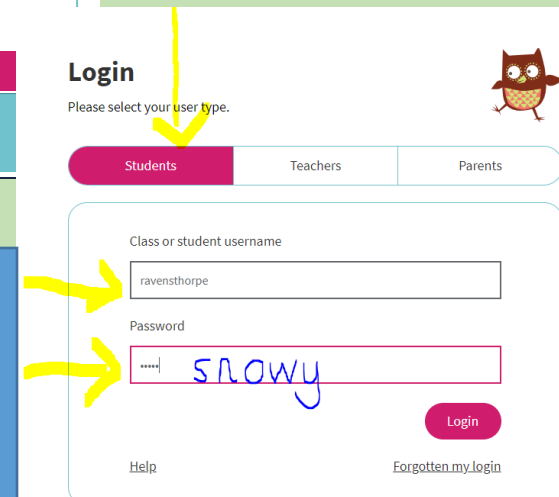
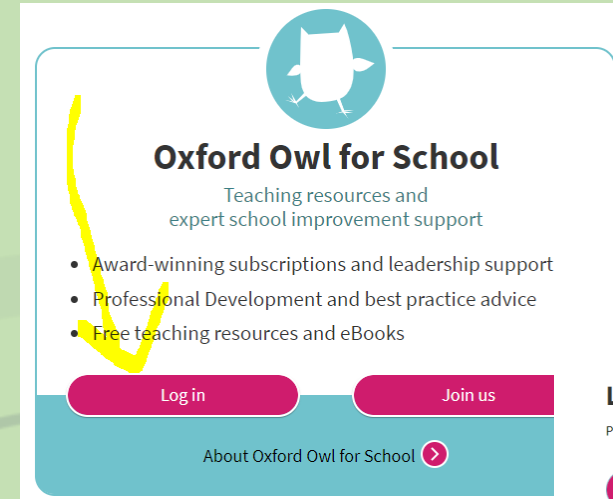


[Bretton Library - Library in Bretton, Peterborough, Peterborough - Visit Peterborough](#)



Make time to play with your children each day. Having lots of conversations is the single most important thing you can do

[Oxford Owl for School and Home](#)



There are lots of books and activities on the Oxford Owl site to help your children. You will need the **student** login:
Username: ravensthorpe
Password: snowy





RAVENSTHORPE
PRIMARY
SCHOOL



WE ARE A PROUD MEMBER OF
PETERBOROUGH KEYS ACADEMIES TRUST



HOME

ABOUT
US

KEY
INFORMATION

OUR
LEARNING

NEWS &
EVENTS

PARENTS

CONTACT
US



**Have you been on the
school website yet?**
www.ravensthorpeprimary.org.uk