



# Feelgood Friday Newsletter

26th  
November  
2021

LEARNING

OPPORTUNITY

COMMUNITY

PERSONAL  
BEST

LEADERSHIP

## From the Headteacher's Office...

Dear parents and carers,

We are writing this on a very wet and windy Friday morning, but that's not going to stop us feeling good! We cannot believe that next week is the start of Advent as we enter December – the weeks have really flown by. No doubt, lots of children in school will be opening the first windows of their Advent calendars and will start to become very excited about Christmas. Unfortunately, due to the ongoing Covid situation, we are still unable to return to some of our favourite 'in person' Christmas events at Ravensthorpe. However, staff are planning some lovely experiences for the children in school: our Owls will be recording a special Christmas performance, children will be involved in Christmas crafts, we'll be singing carols on Teams and, of course, enjoying our traditional Christmas dinner whilst wearing Christmas jumpers!

If you would like an activity to do at home, your child can write to Santa himself! Send your letters via Royal Mail by 10 December to:

Santa's Grotto, Reindeerland, XM4 5HQ. The Elves will write back to your child with a letter from Santa!

We also appreciate that the coming months and festive period can be a challenging time for some of our families. Please get in touch if you are facing any difficulties and we will do our best to help. This is an excellent website: [Parenting and Family Support - Family Lives \(Parentline Plus\)](#)

Have a lovely weekend, Mrs Bowyer and Mr Fry



### Pupil details

It is essential that we have up-to-date records for every child in school, particularly home address, email and mobile phone numbers. If you have moved or changed phone numbers, please email [office@rps.pkat.co.uk](mailto:office@rps.pkat.co.uk)

Thank you



### Injuries (outside of school)

If your child has an injury, such as a broken bone, please do let us know as soon as possible – email [office@rps.pkat.co.uk](mailto:office@rps.pkat.co.uk)

We will need to put a care plan in place before they return to school.

Thank you

### Illness/Other Absences

If your child is ill, please call the school office on 01733 263342 and select option 1 to leave a message (the absence line is available 24/7) or email [office@rps.pkat.co.uk](mailto:office@rps.pkat.co.uk)

Thank you

### Free School Meals

Applying for free school meals is quick and simple to do using the online application form below [www.cambridgeshire.gov.uk/freeschoolmeals](http://www.cambridgeshire.gov.uk/freeschoolmeals) and select “no” when asked if you have previously claimed.

## IMPORTANT INFORMATION

### Medication

If your child requires prescribed medication during the school day, you must complete a medication form, link below

<https://forms.office.com/r/cfRXYcrknQ>



### Collection times

Please follow the one-way system at collection times and do not wave across the courtyard for your child to be released.

Please also continue to wear a face covering when on the school site.

Thank you.

### Attendance

We aim for 100% attendance every day. It is said that good attendance = best achievement: it's not just about learning in lessons, but all the interaction with other children and teachers which can give confidence and self-understanding as they grow. We are sure we can count on the support of all our parents and carers to ensure children are in school, on time, every day. Please see the letter about attendance for more information and please contact the school office if you have any questions.

### Attendance for 15<sup>th</sup> - 19<sup>th</sup> November:

Class	Attendance %	Class	Attendance %
Barn Owls	88.8%	Snowy Owls	94.51%
Yellowbill Kites	93.75%	Red Kites	96.9%
Sparrowhawks	95.56%	Goshawks	92.76%
Golden Kestrels	89.8%	Spotted Kestrels	99.33%
Western Ospreys	97.78%	Eastern Ospreys	96.92%
Peregrine Falcons	92.17%	Merlin Falcons	90.37%
Sea Eagles	96.92%	Martial Eagles	93.21%



# News ...News... News...

## Healthy snacks & water bottles

Children can bring in a healthy snack to have at break time. This **MUST NOT** be chocolate or nuts – we are a nut free school.

Children **must** bring in a named water bottle – please fill with fresh water each day..

Year 4 (29th November) and Year 3 (1st December) are both visiting Stibbington next week for a Victorian School experience. Please ensure your child wears their smart school uniform and a coat as they will be working inside and outside. We know they will have a great day!



**BBC**  
**Children  
in Need**

Uniform  
offer!

**CHROMA**  
SCHOOL : SPORT : BUSINESS

### FESTIVE OFFER

**25% DISCOUNT**  
ON ALL ITEMS IN STOCK  
AND PURCHASED IN STORE\*

### PERIOD OF OFFER

1ST DECEMBER - 7TH JANUARY

TEL: 01733 262526  
sales@chromasport.co.uk  
10 WULFRIC SQUARE, PE3 8RF



\*SUBJECT TO AVAILABILITY ON STOCK SCHOOLWEAR\*

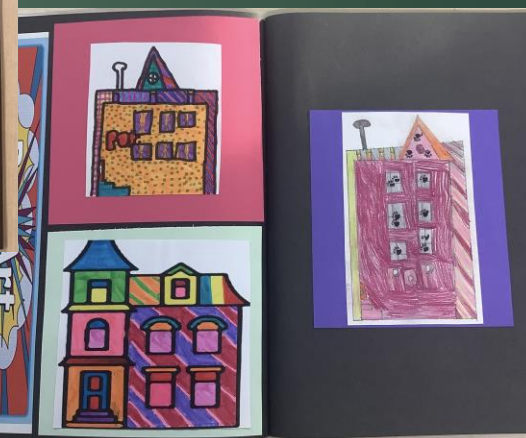
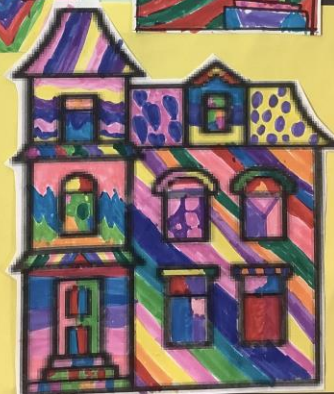
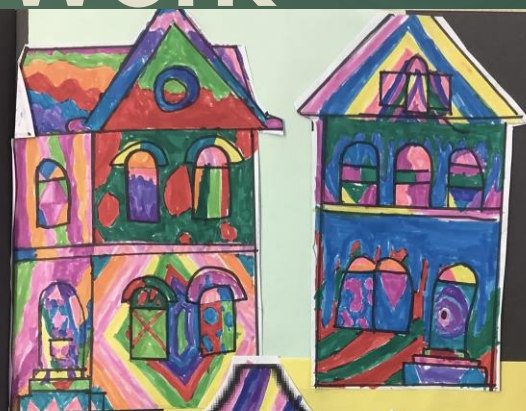
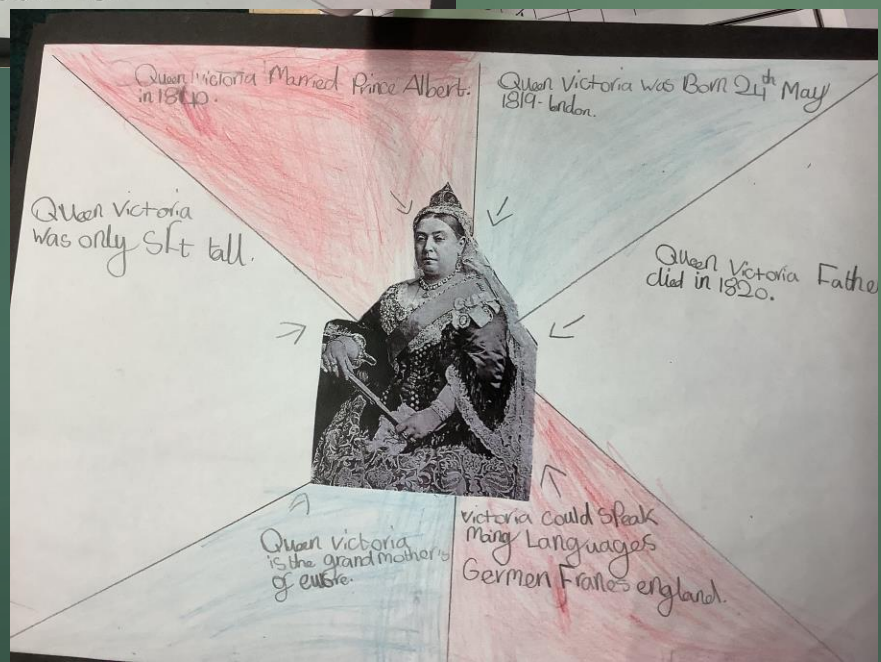
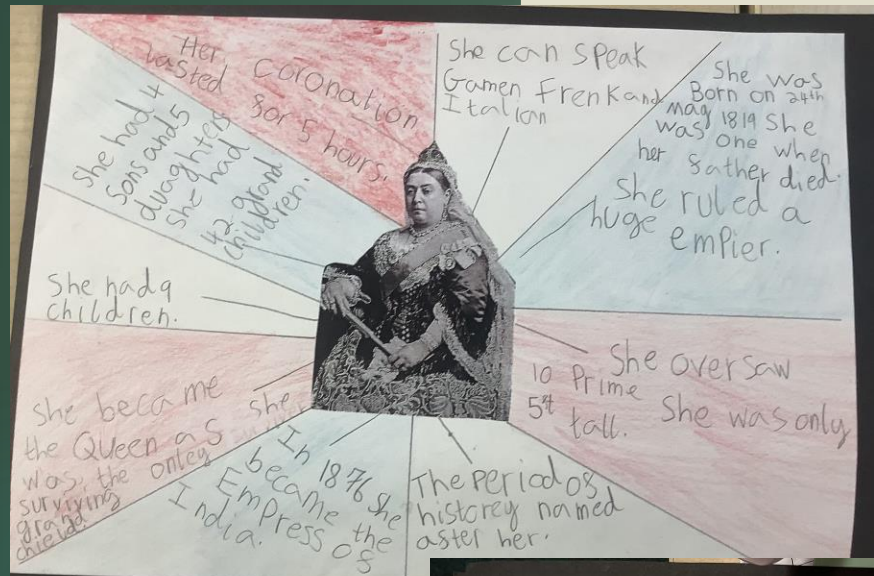
Thank you to everyone who supported our Children in Need fundraising. We raised a massive **£506.61!**

Big thanks to Y6 students, School Council, Mrs Molyneaux and Rocky's Diner for organising the day.

**Thank  
you!**



# Year 3 Beautiful Work







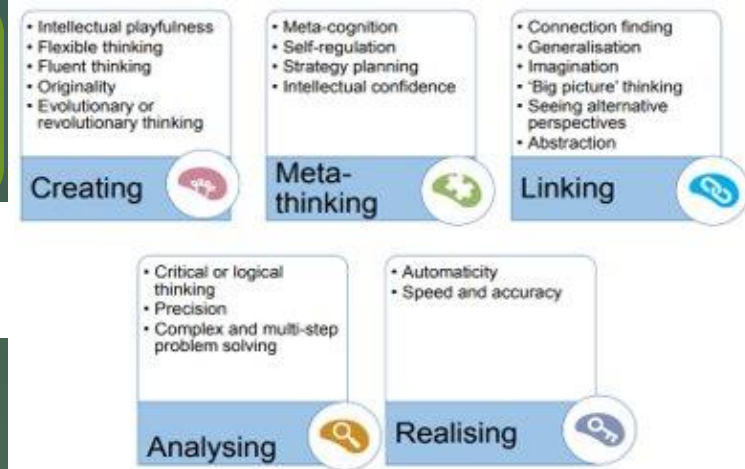


*Our Champions of the week.*



*Celebrating our best!*





These children have demonstrated the skills of **Analysing** this week and are on the way to being High Performance Learners.



Barn Owls:  
**Eliza-Rae**

3 Spotted Kestrels:  
**Lilli**

5 Merlin Falcons:  
**Jess**

Snowy Owls:  
**Albie**

3 Golden Kestrels:  
**Yeshika**



1 Yellowbill Kites:  
**Rada**

2 Sparrowhawks:  
**Elouise**

5 Peregrine Falcons:  
**Seantae**

4 Eastern Ospreys:  
**Gloria**

6 Sea Eagles:  
**Anthony**

1 Red Kites:  
**Lily-Rose**

4 Western Ospreys:  
**Sophia**

2 Goshawks:  
**Melita**

6 Martial Eagles:  
**Abigail**







High  
Performance  
Learning



## Analysing

### Analysing

Analysing is about using logic. Being accurate with your measures or information and applying this step by step to solve even complex problems.

- **Critical or logical thinking** – to be able to deduct, hypothesise and reason.
- **Precision** – to be able to work effectively with rules of a domain.
- **Complex and multistep problem solving** – to be able to break down a task, decide on a suitable approach, and then act.

Our KS2 literary character for this characteristic is Sir Arthur Conan Doyle's Sherlock Holmes. Famous as the world's first and greatest consulting detective, Holmes uses pure **logical** and **precise** observation to solve mysteries, **complex problems** and to capture criminals.

# ACPs

## Advanced Cognitive Performance Characteristics



Sherlock  
Holmes





High  
Performance  
Learning

# ACPs

Advanced Cognitive Performance  
Characteristics



## Analysing

Analysing – school based examples

- **Critical or logical thinking** – to use knowledge of angles in a triangle to find a missing angle.
- **Precision** – being able to measure angles accurately.
- **Complex and multistep problem solving** – use understanding of angles to find a missing angle in a multi-step problem.



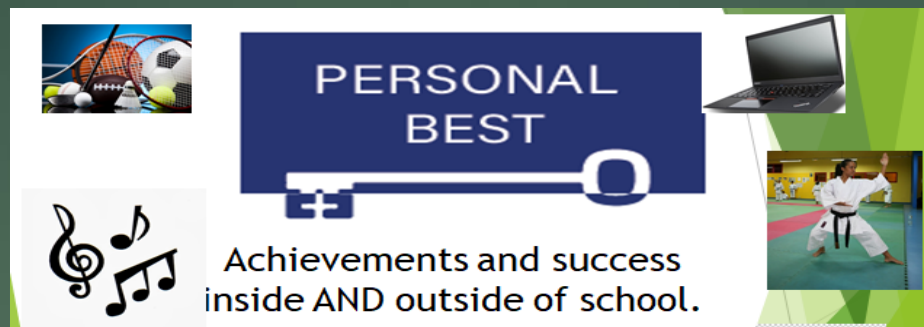
Sherlock  
Holmes



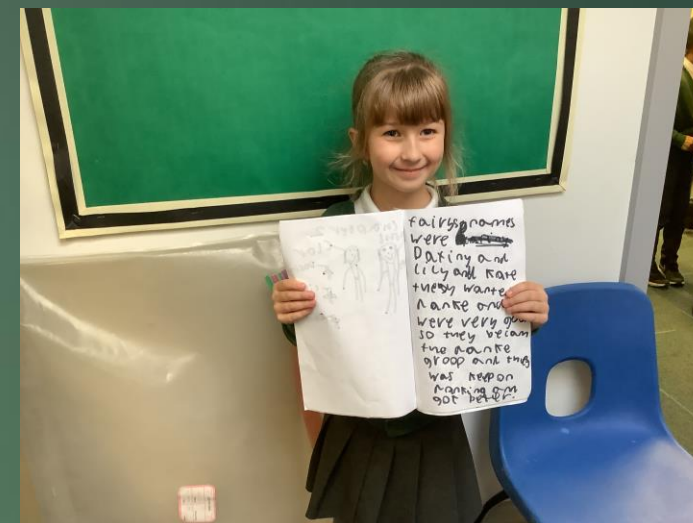




Emeli-Rose in Red Kites achieved a Gold Award in Gymnastics this week.



Natalia in Spotted Kestrels, has successfully completed Stage 2 in swimming.



Emilija C, in Golden Kestrels, has been using her literacy skills to write her own story at home.

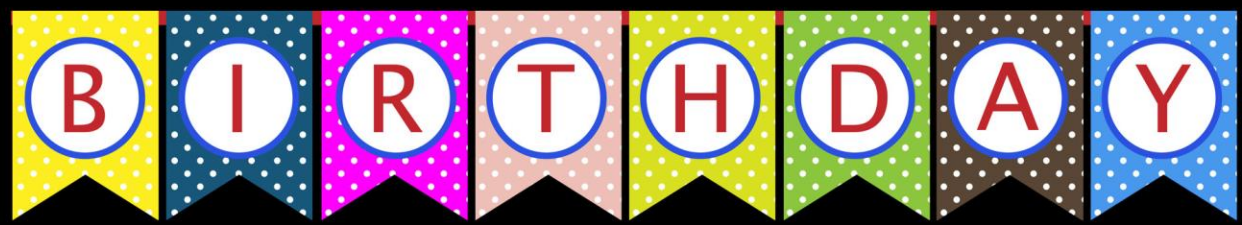
Well done – we are very proud of you!

If your child achieves a 'Personal Best' out of school, please email in to [office@rps.pkat.co.uk](mailto:office@rps.pkat.co.uk) so we can share their wonderful achievements.



# Birthdays this week

COMMUNITY



Mrs Roly

Mr Hopkins

Elliot  
5

Momina  
10

Gustas  
7

Leja  
6

Alice  
6



Happy Birthday from everyone at Ravensthorpe!

# PETERBOROUGH LIONS RUGBY

Minis and Juniors

**FREE** MEMBERSHIP FOR REST OF THIS SEASON



AGES 5 TO 15

EVERY SUNDAY MORNING 10.00am

MEET SOME FRIENDS AND PLAY SOME SPORT

FREE MEMBERSHIP FOR REST OF THIS SEASON

**THERE'S A PLACE FOR EVERYONE ON THE RUGBY FIELD**



@PeterboroughLionsRugbyAcademy

@LionsRfc



Solstice Park, Flaxland, Bretton, PE3 8DF  
[peterboroughlionsacademy@gmail.com](mailto:peterboroughlionsacademy@gmail.com)

THE PRIDE OF PETERBOROUGH



Calling all rugby players!  
Ages 5-15  
Sunday mornings!

Contact [peterboroughlionsacademy@gmail.com](mailto:peterboroughlionsacademy@gmail.com) for more information