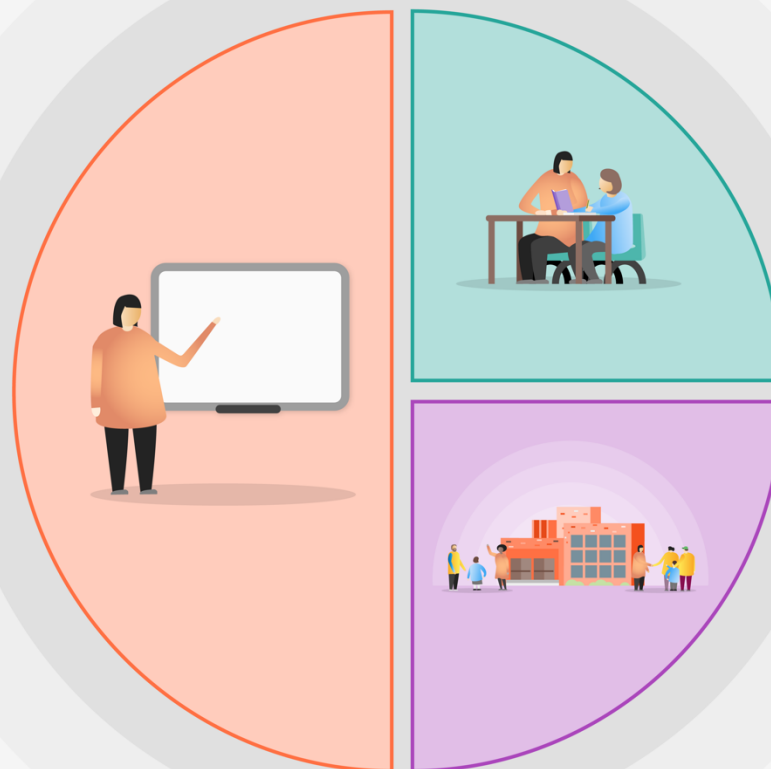


## 1 Teaching

- Quality First Teaching supported by evidence-informed CPD for teachers and support staff – Read Write Inc, Primary Advantage Maths etc.
- Embed use of cognitive and metacognitive strategies through High Performance Learning.
- Diagnostic Assessment, through PiXL, used to identify gaps in learning and to inform future planning.
- Recovery Curriculum planned in English and Maths based on those diagnostic assessments.
- Flexibility in curriculum delivery and additional planning time to revise the curriculum to build on cultural capital and oracy.
- Deliberately reduce workload (e.g. through reduced meetings)
- Senior Leader with responsibility for remote learning, with Google Classroom and Tapestry consistently used for home learning and Google Classroom used in class to develop independence and facilitate access



## 2 Targeted academic support

- Teacher-led targeted intervention groups within Year 6 and Foundation Stage
- Specific Intervention Programmes led by teachers, teaching assistants and sports leads, including RWI 1:1 and Workout Maths
- Nuffield Early Language Intervention in Foundation Stage
- Individual Support Plans for targeted children with SEND
- 1:1 ipads for Years 5 and 6

## 3 Wider strategies

- Behaviour Steps introduced across the school, with CPD for all staff.
- Pastoral Leads for Lower and Upper School with responsibility for supporting pupil's social, emotional and behaviour leads and developing the PHSE curriculum.